



SOUNDSTAGE 6

Juan Rulfo

Soundstage with cyclorama without limitations

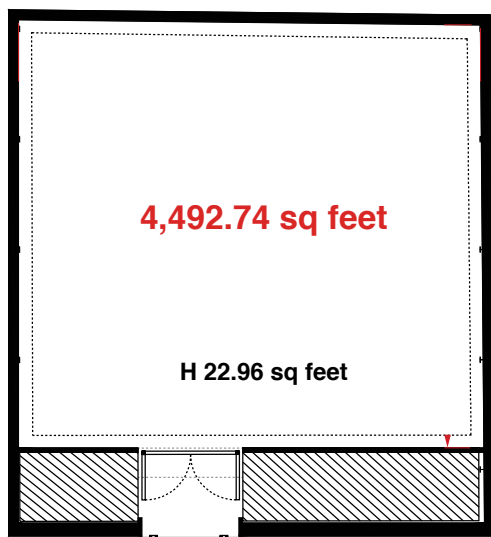
4492.74 SQ FEET

HEIGHT FROM FLOOR TO PLATE: 22.96 SQ FEET

5,819.72 sq feet

TECHNICAL SPECS

ADDITIONAL IN STAGE 6



Cyclorama
(5m high and 10 x 7m)

Elephant Doors
and Pedestrian Doors

Electrified grid
(Supports up to 150 kg per m²)

40 trombones

Lighting bridge

Double wall and insulating roof

Acoustic treatment
on floor and walls

Load center

Polished and level floor

Multipurpose spaces
and bathrooms

Basecamp

Dressing rooms

Makeup room with two and three coquettes

Catering zone

Production offices

Silent air conditioning

1200 A electrical substation

Symmetric dedicated
Internet from 100 mb

*extra cost